



Hoover's quick & snappy start up guide.

8 kg Front load
Washing machine



Model #:	HV-LFL8
Version #:	V1.2
After Sales Support	1300 886 649

Let's get your washing machine up and running!

Welcome to your new Hoover washing machine! We hope that this product brings you many years of enjoyment.

Before installing the washing machine, you must remove the transport bolts from the back of the housing and cover the holes with the transport hole caps provided.

This washing machine must be installed by a competent person. Installation involves removing the transport bolts, leveling the machine, connecting it to your cold water supply and installing the drain hose.

NOTE: Make sure the washing machine is properly and securely installed. Before using the washing machine for washing clothes, run a complete washing cycle without clothes using the drum clean program.

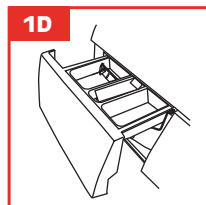
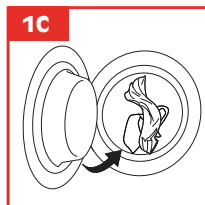
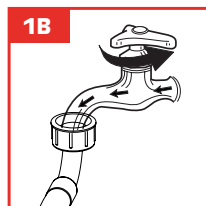
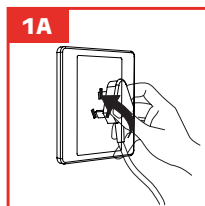
For detailed installation instructions, please consult the supplied instruction manual, which also has comprehensive usage instructions and important safety advice.

Before each wash

- Before washing a load, plug in the machine (Fig. 1a) and open your water tap (Fig. 1b).
- Load your washing into the machine—page 22 in the instruction manual has useful hints to help you with this (Fig. 1c).
- Close the door and add detergent to the drawer—find all the details on page 21 in the instruction manual (Fig. 1d).

Instructions

- Rotate the program dial to switch on the machine, select a program and switch the machine off at the end.
- The display screen (Fig. 2) shows the settings, time remaining, options, codes, etc.
- Use the buttons to set a delay start time or an extra rinse, or adjust the spin speed and water temperature.
- Press the Start/Pause button to start a wash program or to pause it.
- Press and hold a button, as instructed on the panel, to activate the child lock, or to mute the alert sound.



Wash programs

(default values in bold)

Category	Program	Time (hr:min) (A)	Temp. (°C) (B)	Number of Rinses	Spin Speed (rpm) (C)
Light	Quick	0:18	Cold	2	0/400/600/ 800 /1000/1200
	Wool	0:50	20	2	0/400/ 600
Medium	Warm	0:55	30	2	0/400/600/ 800
	Cold	0:57	Cold	2	0/400/600/ 800 /1000/1200
	Steam	1:55	95	2	0/400/600/ 800
	Anti-allergy	2:11	90	2	0/400/600/ 800 /1000/1200
Heavy	Cold	1:14	20	2	0/400/600/ 800 /1000/1200/1400
	Warm	1:20	40	2	0/400/600/ 800 /1000/1200/1400
	Long warm	1:39	40	3	0/400/600/ 800 /1000/1200
	Extra dirty	3:00	40	3	0/400/600/ 800 /1000/1200/ 1400
	Hot (D)	3:10	60	3	0/400/600/ 800 /1000/1200/ 1400
Drum Clean		1:14	60	2	600
Special	Spin	0:11	-	0	0/400/600/800/ 1000 /1200/1400
	Rinse+Spin	0:16	-	1	0/400/600/800/ 1000 /1200/1400
	Rinse+	1:34	Cold	4	0/400/600/ 800 /1000/1200/1400

(A) Default times for reference purposes only.

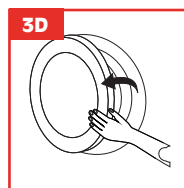
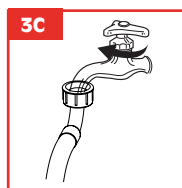
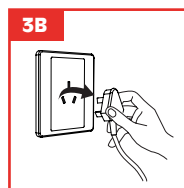
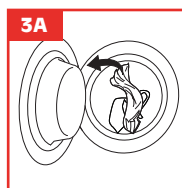
(B) Default temperatures may differ slightly (+/-10°C)

(C) Default spin speed values are in bold

(D) The Heavy - Hot wash program was used for energy efficiency testing to the standard (with a water temperature of 60°C and 1400 rpm spin speed). It is the recommended for a normally soiled load.

Afterwards

- When the buzzer sounds you can open the door and take your washing out of the machine (Fig. 3a). The machine will automatically change into stand-by mode after 10 minutes of inactivity. Turn the dial back to the Off position.
- Unplug the power plug (Fig. 3b).
- Close the water tap (Fig. 3c).
- We recommend you leave the door slightly ajar so the drum can dry properly and to prevent mould and odour development (Fig. 3d).



Hope you enjoy your new Hoover washing machine.